

Tabletop cutout placement



ILLUSTRATION OF CUT OUTS IN TABLETOPS

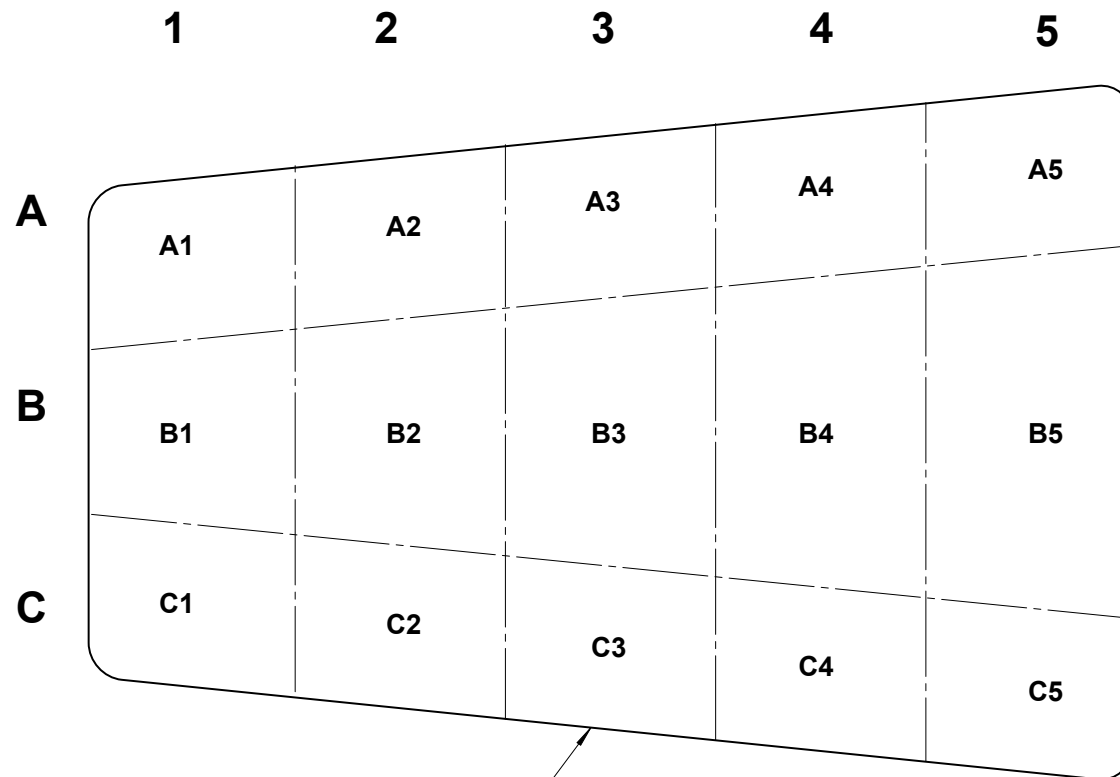
The tabletop is seen from Above. The cutout will be placed as close to the center of the areas as possible. Some might be moved slightly if they interfere with other table components.

	1	2	3	4	5
A	A1	A2	A3	A4	A5
B	B1	B2	B3	B4	B5
C	C1	C2	C3	C4	C5

Chair side on learning etc.

ILLUSTRATION OF CUT OUTS IN TABLETOPS

The tabletop is seen from Above. The cutout will be placed as close to the center of the areas as possible. Some might be moved slightly if they interfere with other table components.

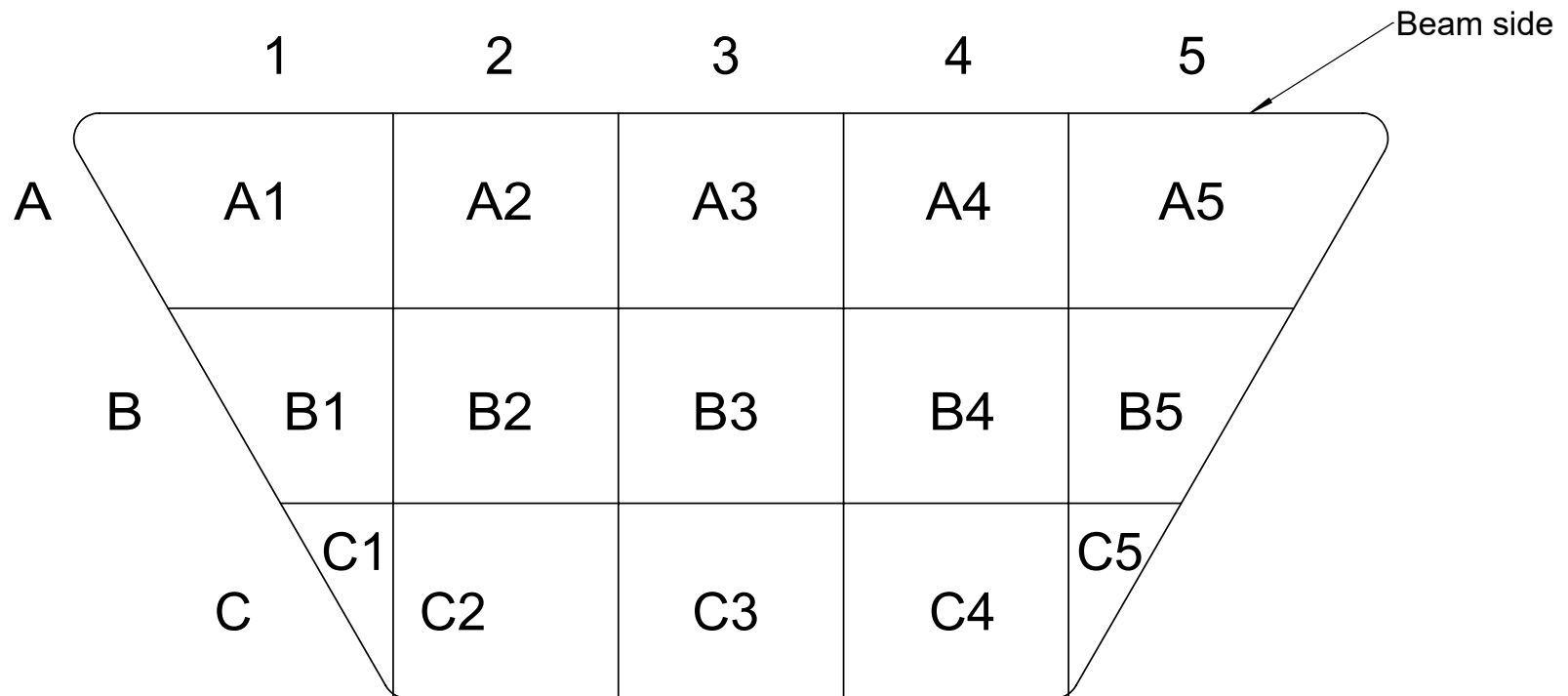


Chair side on learning etc.

FourFold® Taper

ILLUSTRATION OF CUT OUTS IN TABLETOPS

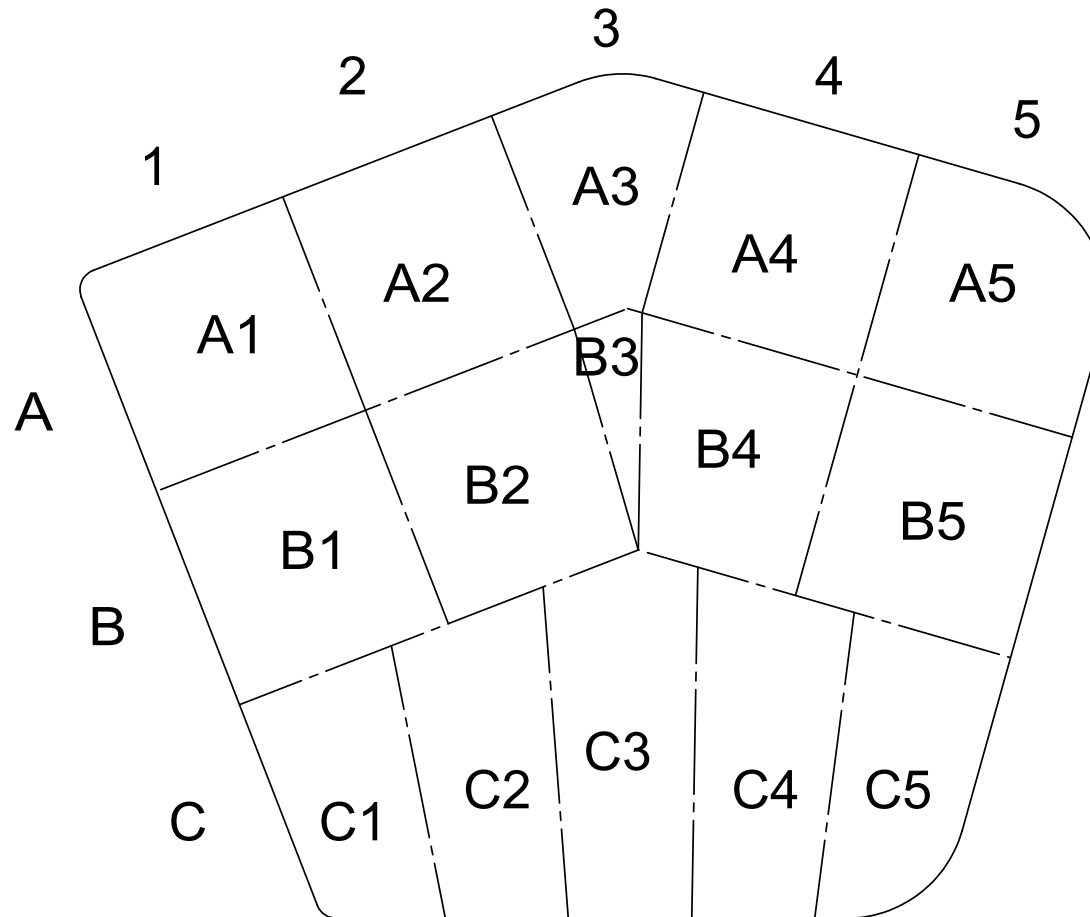
The tabletop is seen from Above. The cutout will be placed as close to the center of the areas as possible. Some might be moved slightly if they interfere with other table components.



FourFold®

ILLUSTRATION OF CUT OUTS IN TABLETOPS

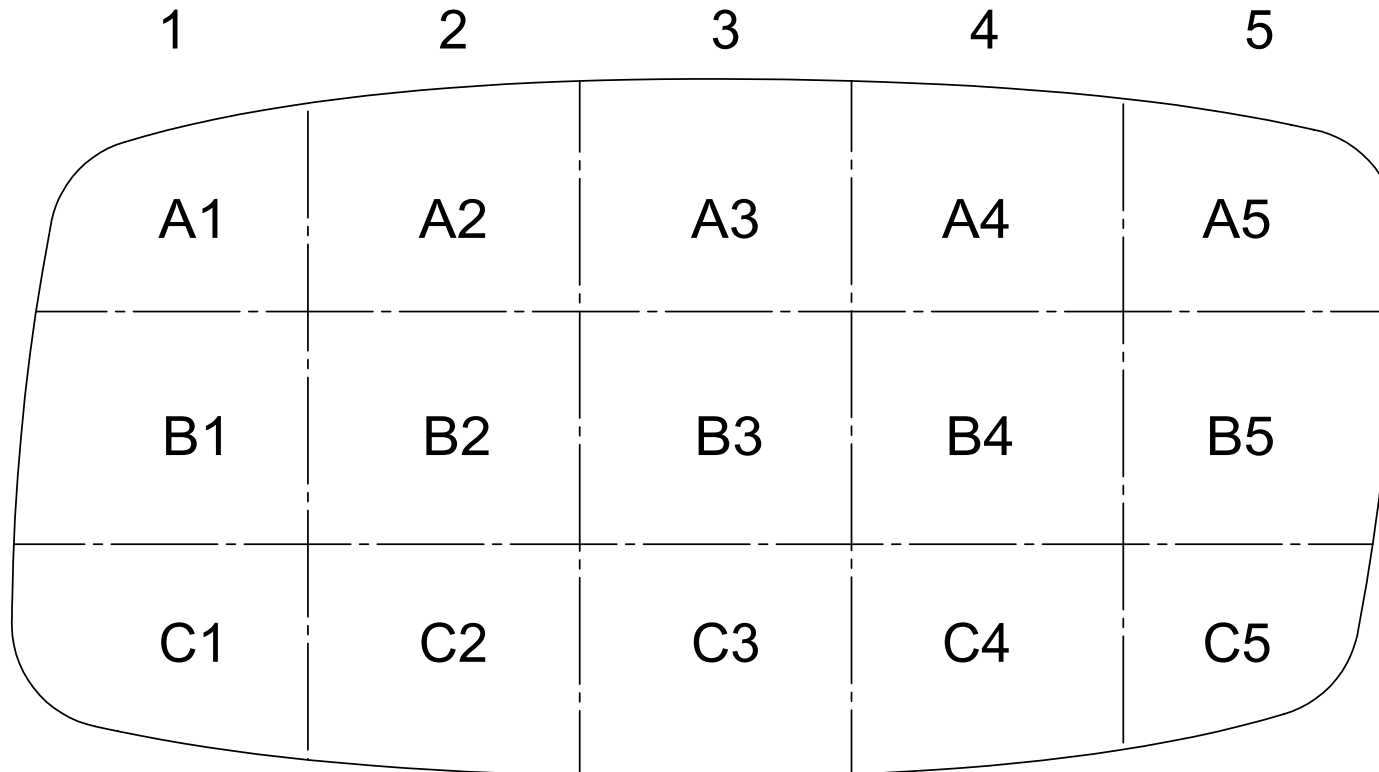
The tabletop is seen from Above. The cutout will be placed as close to the center of the areas as possible. Some might be moved slightly if they interfere with other table components.



FourReal® 741 Flake

ILLUSTRATION OF CUT OUTS IN TABLETOPS

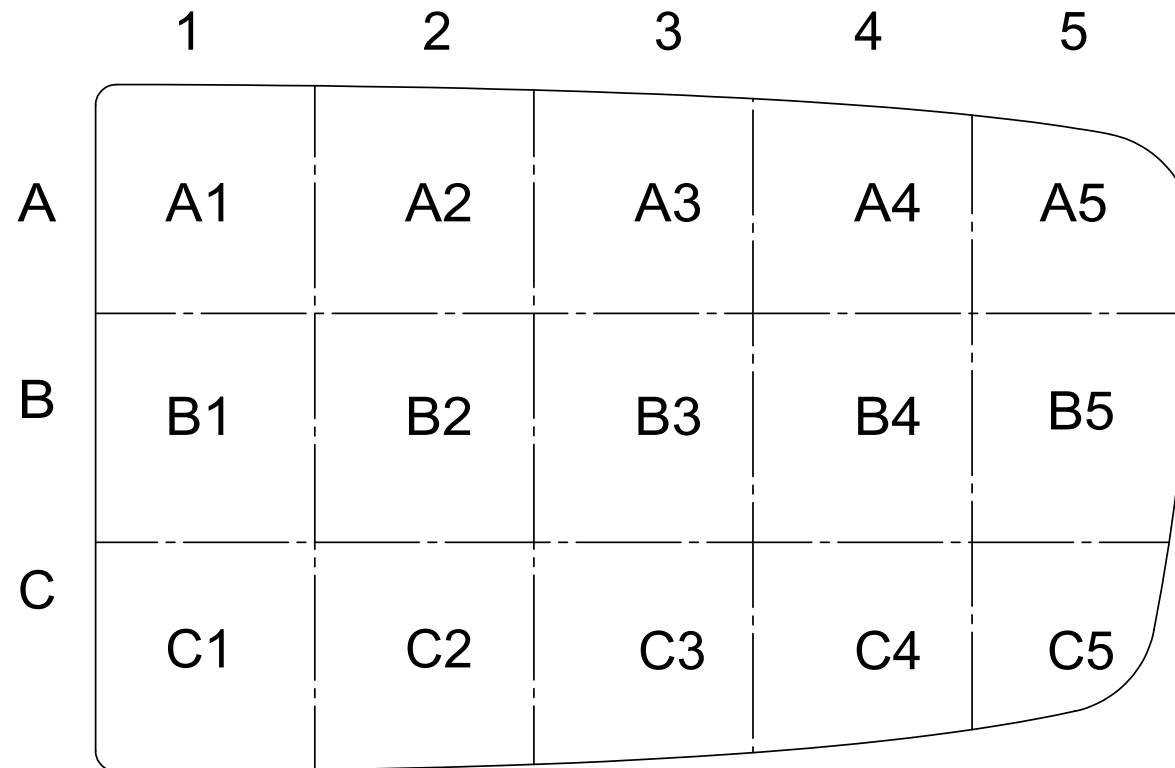
The tabletop is seen from Above. The cutout will be placed as close to the center of the areas as possible. Some might be moved slightly if they interfere with other table components.



FourReal® 741 Flake

ILLUSTRATION OF CUT OUTS IN TABLETOPS

The tabletop is seen from Above. The cutout will be placed as close to the center of the areas as possible. Some might be moved slightly if they interfere with other table components.



FourReal® 741 Flake

Four Design

Lucernemarken 17-19
DK-5260 Odense S.
Tel. (+45) 62 29 19 77

www.fourdesign.dk

